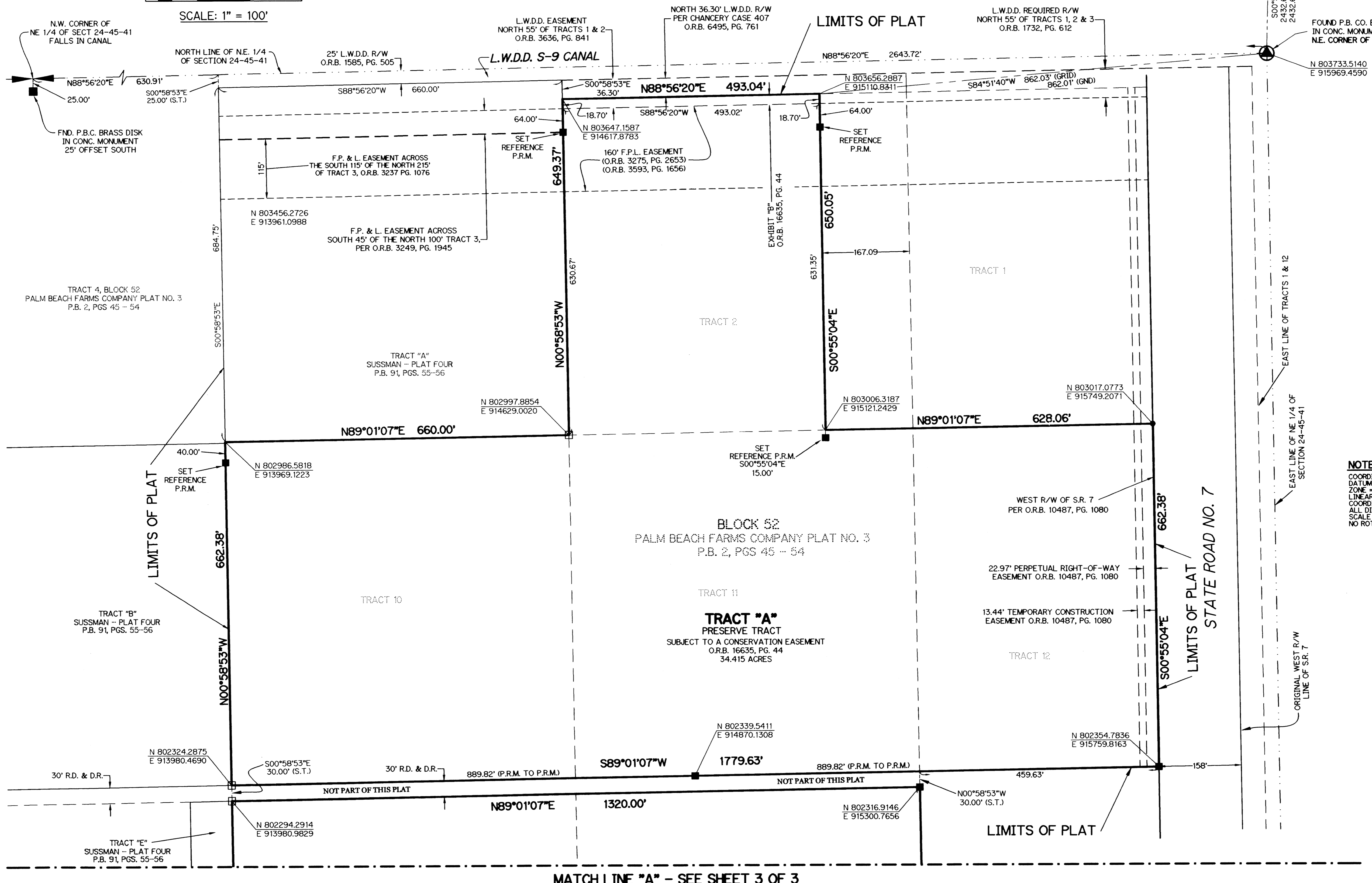
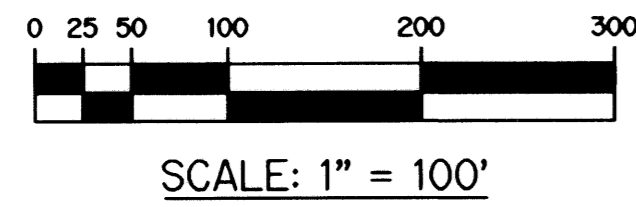


# CANYON LAKES PRESERVE AREA NO. 4

CANYON LAKES (A.K.A. FOGG NORTH) PLANNED UNIT DEVELOPMENT  
BEING A REPLAT OF A PORTION OF TRACTS 2, 12, 21 AND ALL OF TRACTS 10, 11, 14, 15, 22 AND 23, BLOCK 52, PALM BEACH FARMS COMPANY PLAT NO. 3, ACCORDING TO THE PLAT THEREOF, AS RECORDED IN PLAT BOOK 2, PAGES 45 THROUGH 54, OF THE PUBLIC RECORDS, PALM BEACH COUNTY, FLORIDA, ALL LYING WITHIN SECTION 24, TOWNSHIP 45 SOUTH, RANGE 41 SOUTH, PALM BEACH COUNTY, FLORIDA

SHEET 2 OF 3

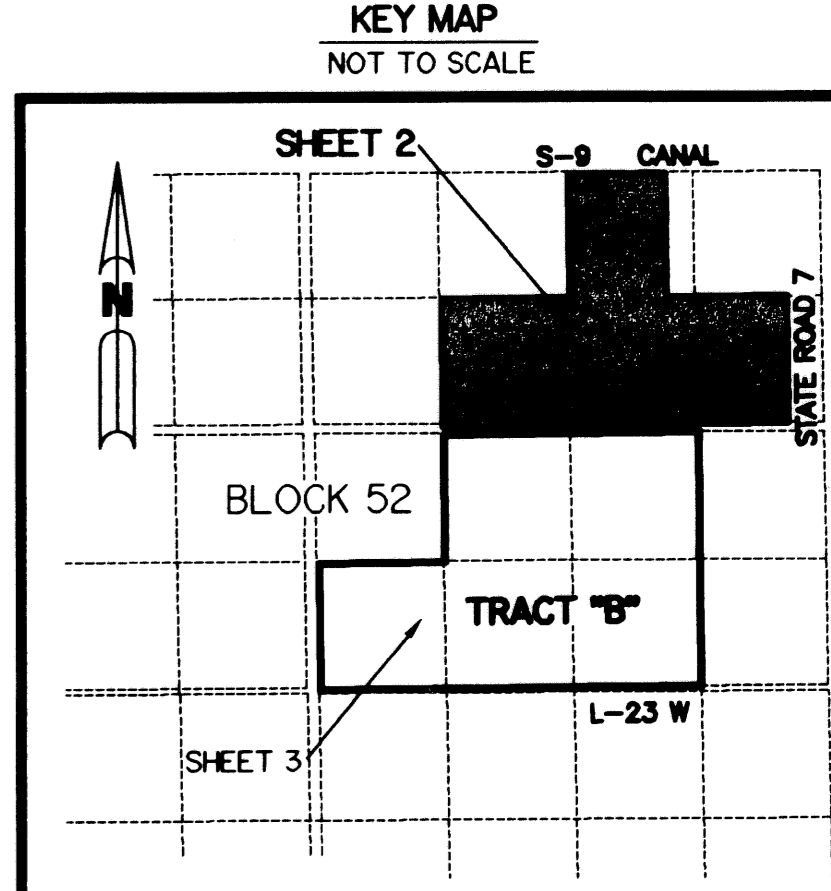
MARCH, 2004



- LEGEND:**
- - FND PERMANENT REFERENCE MONUMENT, L.B. #6674
  - - SET PERMANENT REFERENCE MONUMENT, L.B. #6674
  - - SET PARKER KALON NAIL AND DISC, PERMANENT REF
  - Δ - DELTA ANGLE
  - AC - ACRES
  - B.E. - BUFFER EASEMENT
  - CB - CHORD BEARING
  - CH - CHORD
  - CL - CENTERLINE
  - D.B. - DEED BOOK
  - D.E. - DRAINAGE EASEMENT
  - L - ARC LENGTH
  - L.A.E. - LIMITED ACCESS EASEMENT
  - L.M.A.E. - LAKE MAINTENANCE ACCESS EASEMENT
  - L.M.E. - LAKE MAINTENANCE EASEMENT
  - L.M.E. - LAKE MAINTENANCE EASEMENT
  - L.S.E. - LIFT STATION EASEMENT
  - N.R. - NOT RADIAL
  - N.T.S. - NOT TO SCALE
  - O.R.B. - OFFICIAL RECORD BOOK
  - P.B. - PLAT BOOK
  - P.B.C.U.E. - PALM BEACH COUNTY UTILITY EASEMENT
  - P.C. - POINT OF CURVATURE
  - P.I. - POINT OF INTERSECTION
  - P.G.S. - PAGES
  - P.S.M. - PROFESSIONAL SURVEYOR AND MAPPER
  - R - RADIAL
  - RAD. - RADIAL
  - R/W - RIGHT-OF-WAY
  - S.F. - SQUARE FEET
  - S.T. - SURVEY TIE
  - U.E. - UTILITY EASEMENT
  - P.O.B. - POINT OF BEGINNING
  - P.O.C. - POINT OF COMMENCEMENT
- N 737648.0171  
E 905258.2326 - DENOTES STATE PLANE COORDINATES

**NOTE:**  
COORDINATES SHOWN ARE GRID COORDINATES  
DATUM = NAD 83 (1990 ADJUSTMENT)  
ZONE = FLORIDA EAST ZONE  
LINEAR UNIT = U.S. SURVEY FEET  
COORDINATE SYSTEM = 1983 STATE PLANE TRANSVERSE MERCATOR PROJECTION  
ALL DISTANCES ARE GROUND  
SCALE FACTOR = 1.0000177  
NO ROTATION = (GRID BEARING TO PLAT BEARING)

THIS INSTRUMENT PREPARED BY  
PERRY C. WHITE, P.S.M. 4213, STATE OF FLORIDA  
LAWSON, NOBLE AND WEBB, INC.  
ENGINEERS PLANNERS SURVEYORS  
420 COLUMBIA DRIVE  
WEST PALM BEACH, FLORIDA 33409  
LB-6674



SUBDIVISION CANYON LAKES PRESERVE AREA No. 4  
 BOOK 101 PAGE 171  
 FLOOD ZONE B FLOOD MAP # 050 P  
 QUAD # 005 ZONING PD  
 SS ZIP CODE 33437  
 TAZ 742  
 FUD NAME Fogg North

MATCH LINE "A" - SEE SHEET 3 OF 3